



Struthers-Dunn

407 East Smith Street, Suite B

Timmonsville, SC 29161

Telephone: (843)346-4427

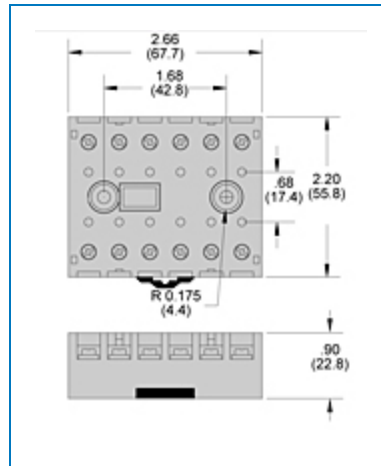
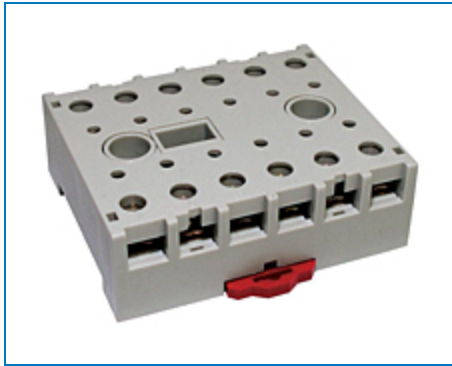
Fax: (843)346-4465

Email: info@struthers-dunn.com

Website: www.struthers-dunn.com

Item # 27390D, Industrial 12 & 14 Pin Socket

These industrial style sockets offer front-connected wiring on one level with screw terminals accessible and numbered for ease in installation, wiring and checkout. Sockets are polarized. The mating relay has a locking clip that snaps into the socket, eliminating any need for external holding devices.



[Specifications](#) | [Construction](#) | [Electrical Rating](#) | [Temperature](#) | [Dielectric Strength](#) | [Miscellaneous](#)

Specifications

Style

12 Pin socket DIN / panel mount, with fingersafe non-removable screw terminals and clamping plates

Weight

102 g

Construction

Protection Category (finger safe)	IP20 IEC (D Series)
Internal Metal Tracks	Copper alloy, zinc plated
Screws Terminals	Steel, zinc plated
Screw Style and Size	Combination Head - M3.5x0.06x6.35MM
Screw Terminals Torque Maximum	9 lb-in, 1.01 Nm

Electrical Rating

Nominal Voltage Rating	600 V
Nominal Current Rating	10 A

Temperature

Operating	-40 to 80 °C
------------------	--------------

Dielectric Strength

Output to Adjacent Output Terminals	2000
Output to Input Terminals	2000 Vrms
Terminals to Rail Chassis	2000 Vrms

Miscellaneous

Chassis Mount Screw Torque	8- 10lb, 0.90 Nm
Flammability Rating	94V-0
Wire Size	20 -12 AWG, 0.5 - 3mm

Body Color

Light grey

Din Locking Clip Color

Red